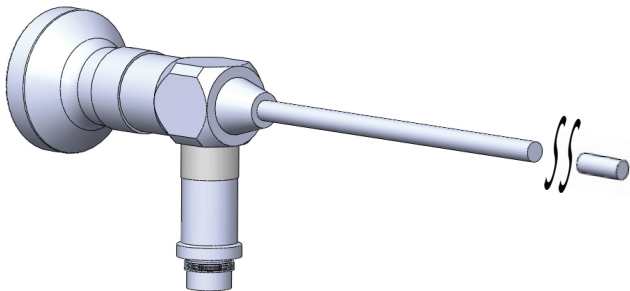
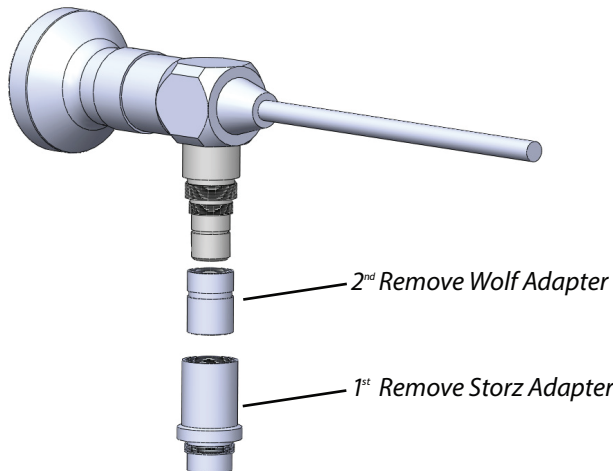


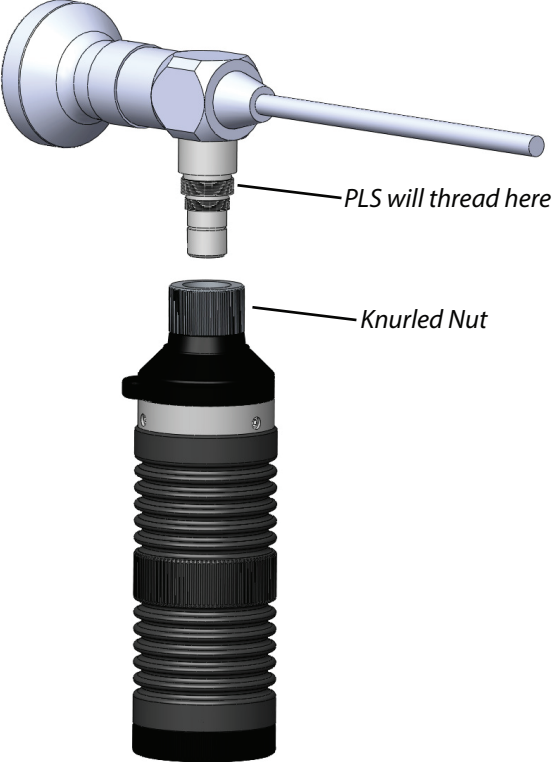
Attaching the Portable LED Light Source (PLS) to Rigid Endoscope



Rigid Endoscope with provided adapters attached



1. First Unthread and Remove the Storz adapter
 2. Second Unthread and Remove the Wolf adapter
- *Some force and grip assistance may be required



The PLS threads to the upper threads on the endoscope. Hold the PLS in the palm of your hand utilizing your thumb and forefinger thread the knurled nut onto the endoscope



Rigid Endoscope with PLS

Contact Optim's Customer Service with any questions 800.225.7486 / sales@optim-llc.com



64 Technology Park Road, Sturbridge, MA 01566
 Toll-free: 800.225.7486 Worldwide: 1.508.347.5100
 Fax: 508.347.2380
 Email: sales@optim-llc.com
 Website: www.optim-llc.com

DCN 08814
 Part No. N015040D
 Oct. 2014